



PERFORMANCE

4600 SERIES



ENERTEC  
WINDOW SYSTEMS INC.



**ENERTEC**

Window Systems Inc.

# Contemporary Windows

**Enertec Window Systems Inc.** is a manufacturer of energy-efficient, contemporary line of windows to be used as replacement windows or for new construction. Our windows are made with **100% lead-free, virgin uPVC** for improved resistance to impact, discoloration and outstanding thermal performance. We believe that an investment in energy-efficient windows not only brings the added value of comfort and security, but also green living in harmony with the environment.

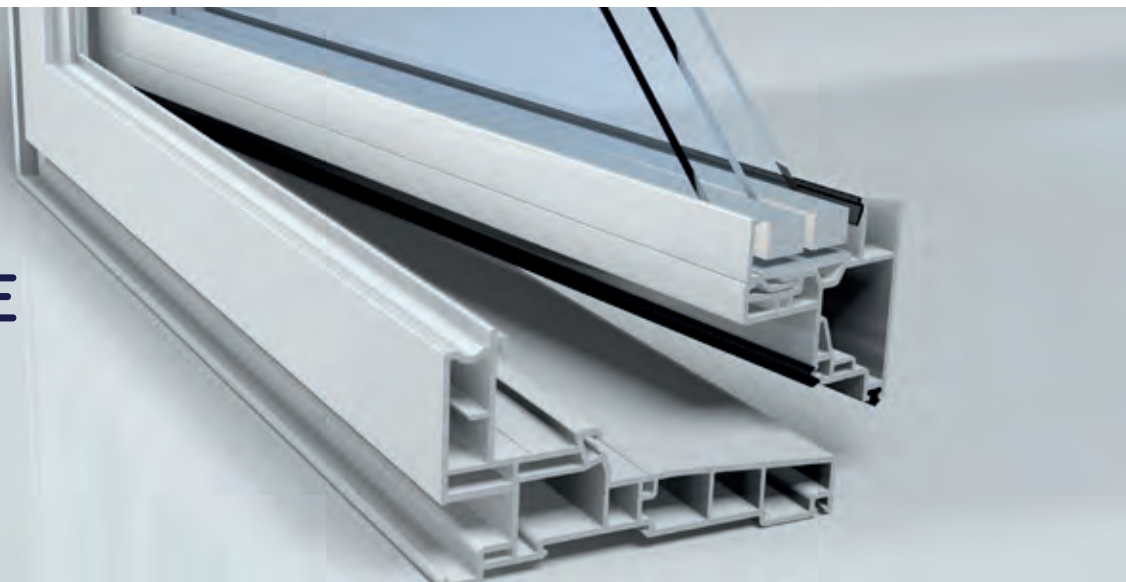
[enertecwindows.ca](http://enertecwindows.ca)





# PERFORMANCE

## 4600 SERIES



## The Most Complete Window System

The most innovative and energy efficient products on the market, perfectly adapted to your needs and designed for performance and durability.

## Table of Contents

Casement, awning, fixed .....	4
Sliding & hung windows .....	6
Hardware .....	9
Brickmolds & Extensions .....	10
Glass .....	11
Certifications .....	12









# Casement, Awning & Fixed

## AESTHETICS, COMFORT AND SECURITY

Specially designed to meet market trends, user needs, with sturdy multi-chamber profiles, ensuring an exceptionally solid, energy-efficient window.

- + Rigid welded PVC frame, with or without brickmoulding, plus gypsum and wooden cage for easier insulation
- + Rigid PVC welded sash providing superior strength and durability
- + Interior panel in the insulated portion of the divider, near natural air convection
- + 90-degree sash opening for a quick and easy cleaning
- + Triple weather-stripping for maximum protection against wind, air and water
- + Sealed double or triple energy-efficient glass unit for greater comfort
- + Wide choice of options for interior and exterior finishing



## PERFORMANCE

4600 SERIES

### IG CONFIGURATION

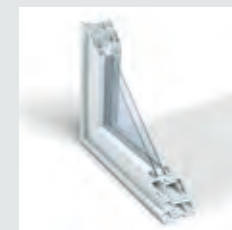


**Double glazing**  
7/8" (22.2mm)



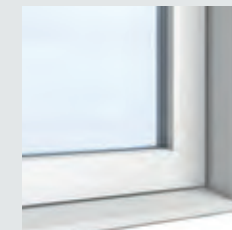
**Triple glazing**  
1 1/4" (32mm)

### FRAME



3 1/4"

### PANEL



Contemporary







# Slider & hung windows

## Excellent Price to Quality Ratio

The single and double sliding and hung windows series are perfect for tight spaces. Narrow Profiles allow maximum light access and provide unencumbered visibility outside.

- + Rigid welded PVC frame, with or without brickmoulding, plus gypsum and wooden cage
- + Interior panel in the insulated portion of the divider, near natural air convection
- + Triple weather-stripping for maximum protection against wind, air and water
- + Panel open 90 for simpler cleaning and greater security
- + Tandem caster panels to facilitate sliding
- + Sealed double or triple energy-efficient glass unit for greater comfort
- + Wide choice of options for interior and exterior finishing
- + Central latch with secure cam
- + Lifting handle built into panel



## PERFORMANCE 4600 SERIES

### IG CONFIGURATION

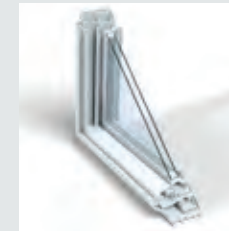


**Double glazing**  
7/8" (22.2mm)



**Triple glazing**  
1 1/4" (32mm)

### FRAME



3 1/4"



**ENERTEC**  
WINDOW SYSTEMS INC.







# Hardware

## CASEMENT & AWNING WINDOWS



### Standard Multipoint

The multipoint lock is our standard and the most cost-effective option.

Lock and Encore folding handle are available in **white** and **black**.



### Assa Abloy

Impact rated heavy duty multipoint lock system for casement and awning windows exceeds testing norms by 300% for durability and extreme weather. Available with an optional **corner drive**.



### Corner Drive

Enhance large casement and awning windows with the optional corner drive for maximum efficiency and air tight seal



### NOVA II Lock & NOVA Slim Folding Handle by Assa Abloy

**Nova II** casement and awning lock combined with **Nova Slim** folding handle offer a classic, elegant and timeless solution to your window hardware finish. Available in **white**, **black** and **brushed nickel**.

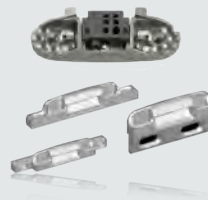


### VESTA Lock & Folding Handle by Assa Abloy

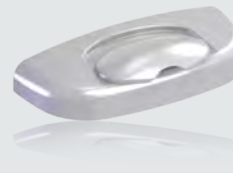
Combining contemporary aesthetics and styling with optimized security and ease of operation, the VESTA offers an extra low profile eliminating interference with blinds and window treatments. Available in **white**, **black** and **brushed nickel**.

## SLIDING & HUNG WINDOWS

- ✦ The standards in automatic sash lock solutions for hung and sliding windows.
- ✦ Hurricane rated in impact certified applications.
- ✦ Superior performance compared to cam locks.



Autolock Hardware



Regular Cover



Slim Line Cover



# Options

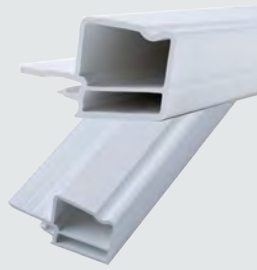
## Brickmolds (Exterior)



**ZERO**  
2" Wide Frame  
Extention



**3/8"**  
1-1/4" Wide with  
Optional  
Nailing Fin



**3/4"**  
1-1/4" Wide



**1-3/8"**  
1-1/4" Wide



**1-7/8"**  
1-1/4" Wide

## Jamb Extensions & Casing

### Vinyl Package



**Flat Contemporary**  
All Vinyl Jamb  
Extension & Flat  
Casing



**Colonial**  
All Vinyl Jamb  
Extension & Colonial  
Casing

### Wood Package



**Colonial**  
Primed Wood Jamb  
Extension & Colonial  
Casing



**Colonial Back Bend**  
Primed Wood Jamb  
Extension & Colonial  
Back Bend Casing



**Step**  
Primed Wood Jamb  
Extension & Step  
Bevel Casing



**Flat**  
Primed Wood Jamb  
Extension & Flat  
Casing



# Glass

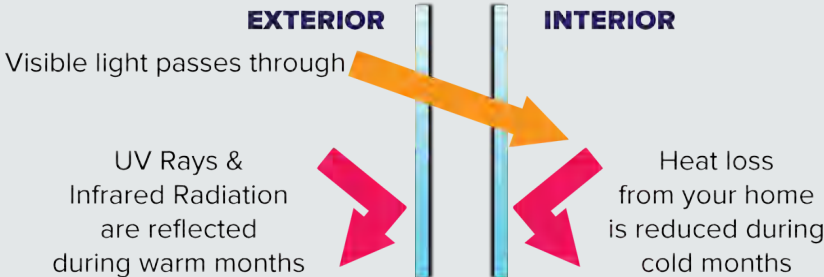


**Cardinal LoE-180**  
Cold outside, warm inside. LoE-180 by Cardinal Glass coated residential glass is designed to maximize solar heat gain and retain indoor heat. This type of glass is referred to as solar gain glass.



**Cardinal LoE-272**  
LoE-272 by Cardinal Glass has more tint and blocks out more UV rays. Compared to LoE-180 it has a slightly inferior performance during colder months. This glass is recommended for windows with lots of sun exposure.

## LoE Glass Explained



**Cardinal LoE-i89**  
LoE-i89 combined with LoE-180 creates superior performance during winter, reflecting interior heat back inside a room



**Cardinal Neat+**  
Neat+ uses a combination of static dissipation to reduce the amount of dust on the window's surface, along with help from the sun to break down greenhouse gases and other pollutants to keep the window naturally cleaner.

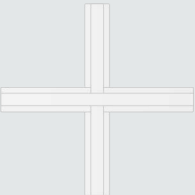
## Grills



**5/8" Flat**  
Available in white, black, pewter, two tone and custom colours



**1" Flat**  
Available in white, and custom colours



**Georgian**  
Available in white



**1/4" Pewter Square** Also available in white & brass

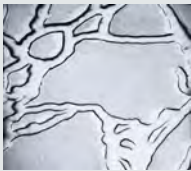
## Privacy & Tinted Glass



Sandblasted / Acid Etched



Rain Glass



Delta Frost



PinHead



Tinted Gray or Bronze



# Performances

PERFORMANCE  
4600 SERIES

## STRUCTURAL

Model	Standards	Air tightness	Water resistance [PA]	Wind-Load Resistance [PA]	Force entry	Rating Size
Fixed	NAFS-AAMA/WDMA/CSA 101/I.S.2/A404-11	A1 A2 <a href="#">A3</a>	140       <a href="#">730</a>	720       <a href="#">4800</a>	F10 <a href="#">F20</a>	CW-PG100-FW (72" X 72")
Casement	NAFS-AAMA/WDMA/CSA 101/I.S.2/A404-11	A1 A2 <a href="#">A3</a>	140       <a href="#">730</a>	720       <a href="#">4800</a>	F10 <a href="#">F20</a>	CW-PG100-C (32" X 63")
Awning	NAFS-AAMA/WDMA/CSA 101/I.S.2/A404-11	A1 A2 <a href="#">A3</a>	140       <a href="#">730</a>	720     <a href="#">2400</a>	F10 <a href="#">F20</a>	CW-PG50-AP (62" X 48")
Single hung	NAFS-AAMA/WDMA/CSA 101/I.S.2/A404-11	A1 A2 <a href="#">A3</a>	140       <a href="#">730</a>	720       <a href="#">4080</a>	F10 <a href="#">F20</a>	R-PG85-H (39" x 63")
Single slider	NAFS-AAMA/WDMA/CSA 101/I.S.2/A404-11	A1 A2 <a href="#">A3</a>	140       <a href="#">620</a>	720     <a href="#">2880</a>	F10 <a href="#">F20</a>	R-PG60-HS (63" x 43")

Products once classified as A, B or C, are now listed by performance grade (PG). The higher the grade, the better the performance. The performance grades above apply to windows the same size as, or smaller than, those indicated.

## THERMAL



**ENERGY STAR CERTIFICATION.** Choose windows with excellent insulation and high energy efficiency to save on heating and make your home more comfortable. Energy efficiency is expressed as **U**, **R** and **ER**. The different glazing options of the performance series allow you to optimize the desired performance

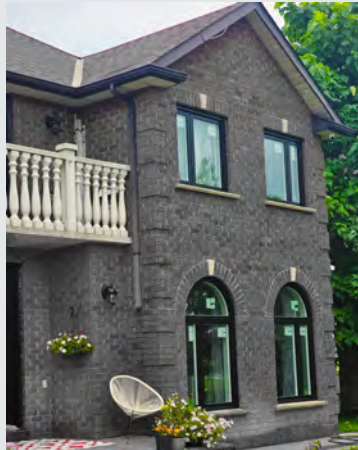
<b>U VALUE</b> HEAT LOSS, SELECT A LOW VALUE.	<b>R VALUE</b> INSULATION AND CORRESPONDS TO 1/U SELECT A HIGH VALUE.	<b>ER VALUE</b> ENERGY EFFICIENCY RATIO HEAT LOSS + INSULATION + SOLAR GAIN, SELECT A HIGH VALUE.
--	--	--



# Colours & Gallery



We work with Gentek, Kaycan  
and Benjamin Moore colours.







# PERFORMANCE

4600 SERIES



**ENERTEC**  
WINDOW SYSTEMS INC.

99 Rodinea Road  
Units 1-3  
Vaughan, ON, L6A 1R3  
[www.enertecwindows.ca](http://www.enertecwindows.ca)

